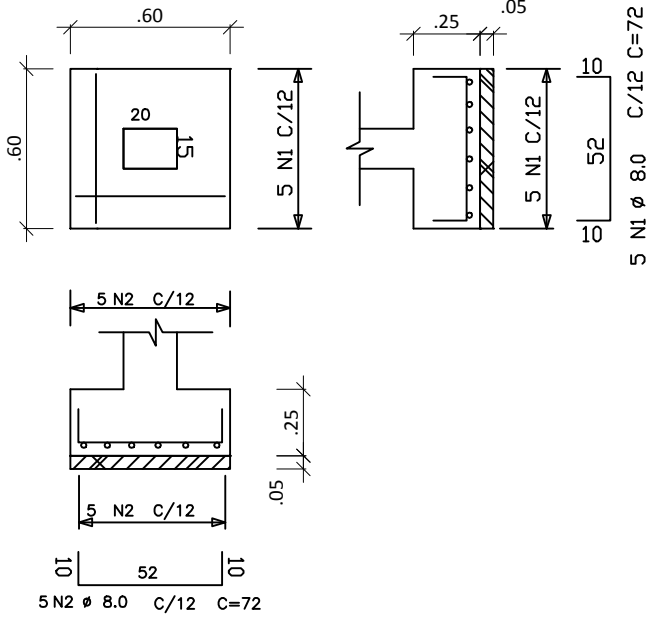
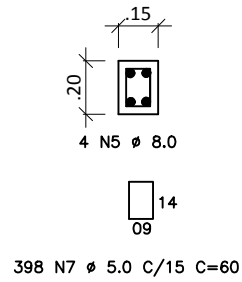


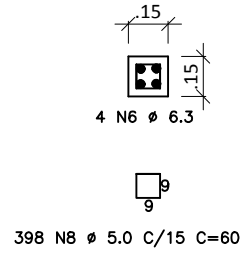
### SAPATAS S1 (67)



### CINTAS 20X15



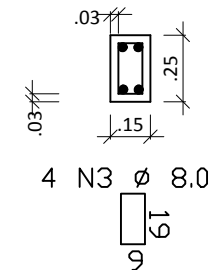
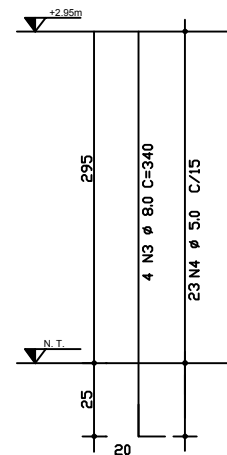
### VIGAS 15X20



### QUADRO DOS FERROS

N	BITOLA	PESO/M	COMP. (cm)	QUANT.	COMPR TOTAL (cm)	PESO TOTAL 10%
01	8.0	0,390	72	115	8280	35,52
02	8.0	0,390	72	115	8280	35,52
03	8.0	0,390	340	92	31280	134,19
04	5.0	0,140	70	529	37030	57,03
05	8.0	0,390	6100	4	24400	104,68
06	6.3	0,245	6100	4	24400	67,34
07	5.0	0,140	60	398	24000	36,78
08	5.0	0,140	50	398	20000	30,65

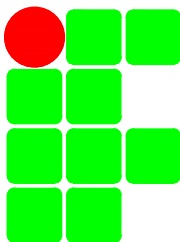
### PILARES 15X25



### RESUMO

BITOLA	PESO TOTAL 10%
8.0	309,91
6.3	67,37
5.0	124,46

CONCRETO ESTRUTURAL  
FCK=25 Mpa



INSTITUTO FEDERAL DE EDUCAÇÃO, CIÊNCIA E TECNOLOGIA  
DO SERTÃO PERNAMBUCANO

DIRETORIA DE EXPANSÃO, REESTRUTURAÇÃO E OBRAS

RESPONSÁVEL TÉCNICO:  
LAIS SAMPAIO/CREA BA 94678

PROPRIETÁRIO:  
CAMPUS PETROLINA ZONA RURAL

ESCALA:  
1/25

ASS. PROP.:

FOLHA:

CONSTRUÇÃO MURO ALOJAMENTO - DETALHES - ARQUITETÔNICO

02/02